

Alphitonia excelsa

Family : Rhamnaceae

Habit : Medium-sized tree. Flowers are small, white and borne in large quantities. Fruit black,  $\pm 10$  mm dia. Plant coppices readily after damage - coppice growth light green, foliage very dense.

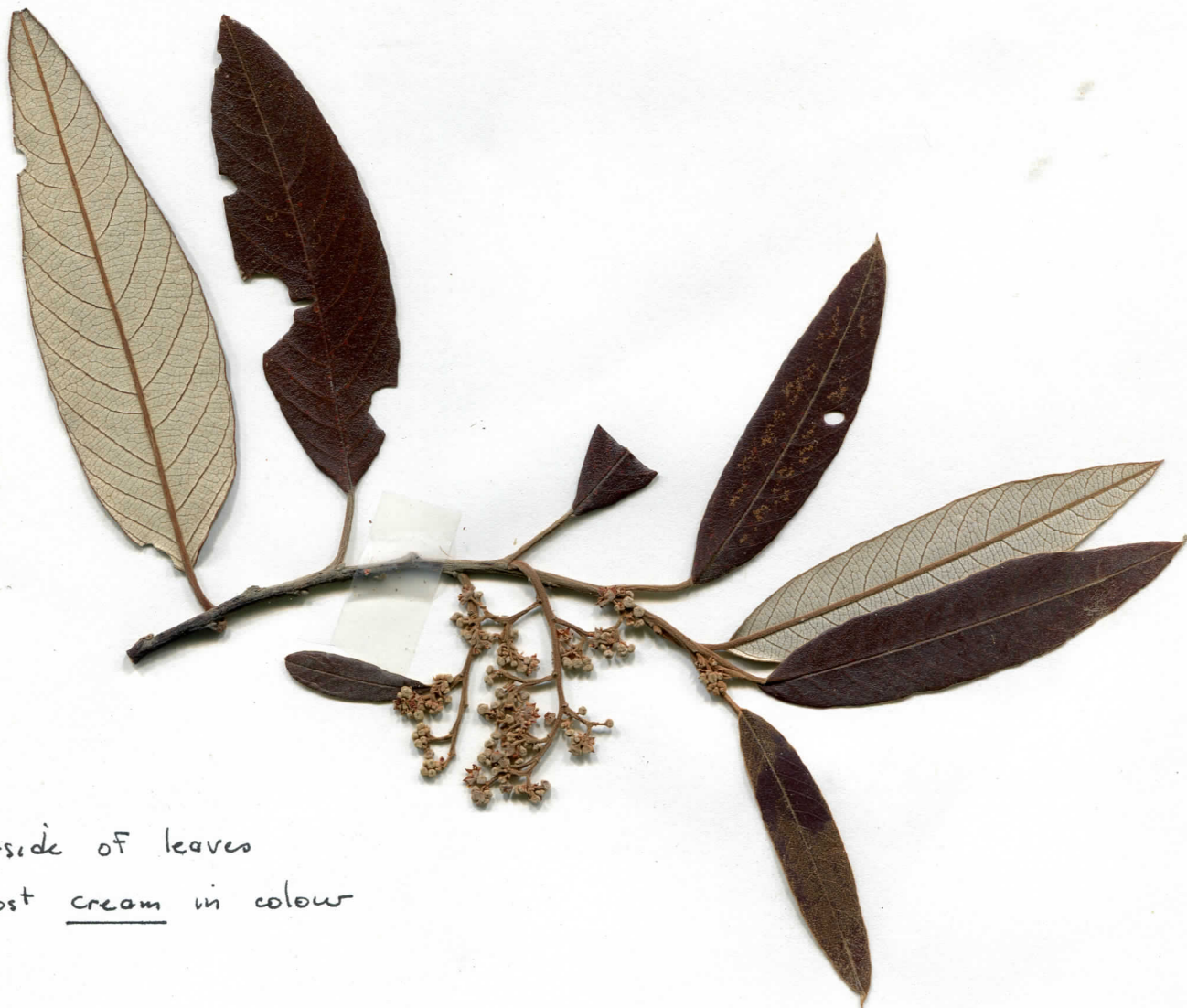
Habitat : Rainforest - eucalypt forest - wallum.

Flowering : March - April

Collection site : Chermiside Hills

Collection date : April 1987

Reference : K. Williams Vol. 1



Underside of leaves  
almost cream in colour