

Dodonaea triquetra

Family : Sapindaceae

Habit : A large shrub to 5 m, with a fairly compact canopy. Seed capsules prominent on the plant for long periods, and are 3-sided. They may be light green or purple.

Habitat :

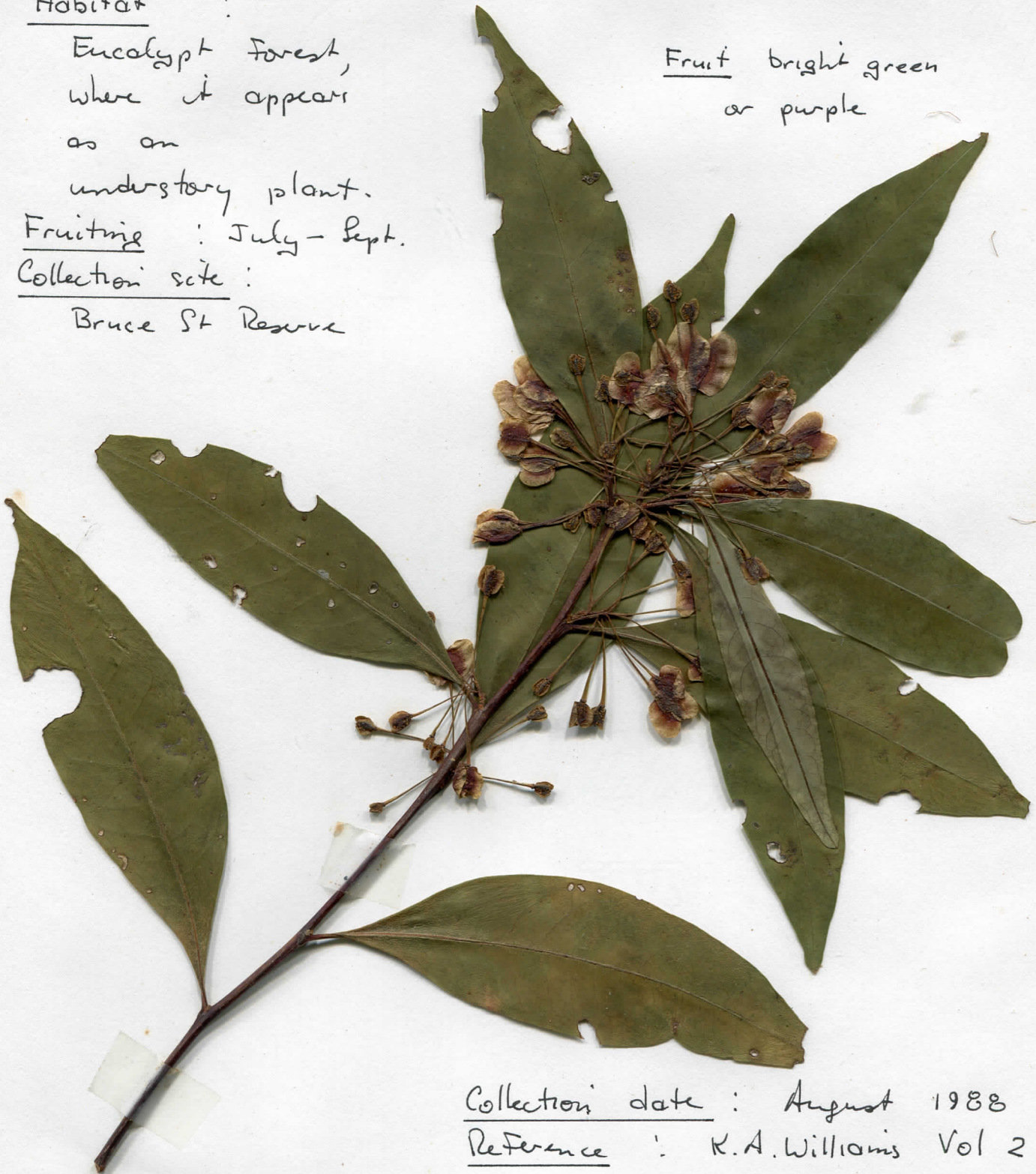
Eucalypt forest, where it appears as an understory plant.

Fruiting : July - Sept.

Collection site :

Bruce St Reserve

Fruit bright green or purple



Collection date : August 1988

Reference : K.A. Williams Vol 2