

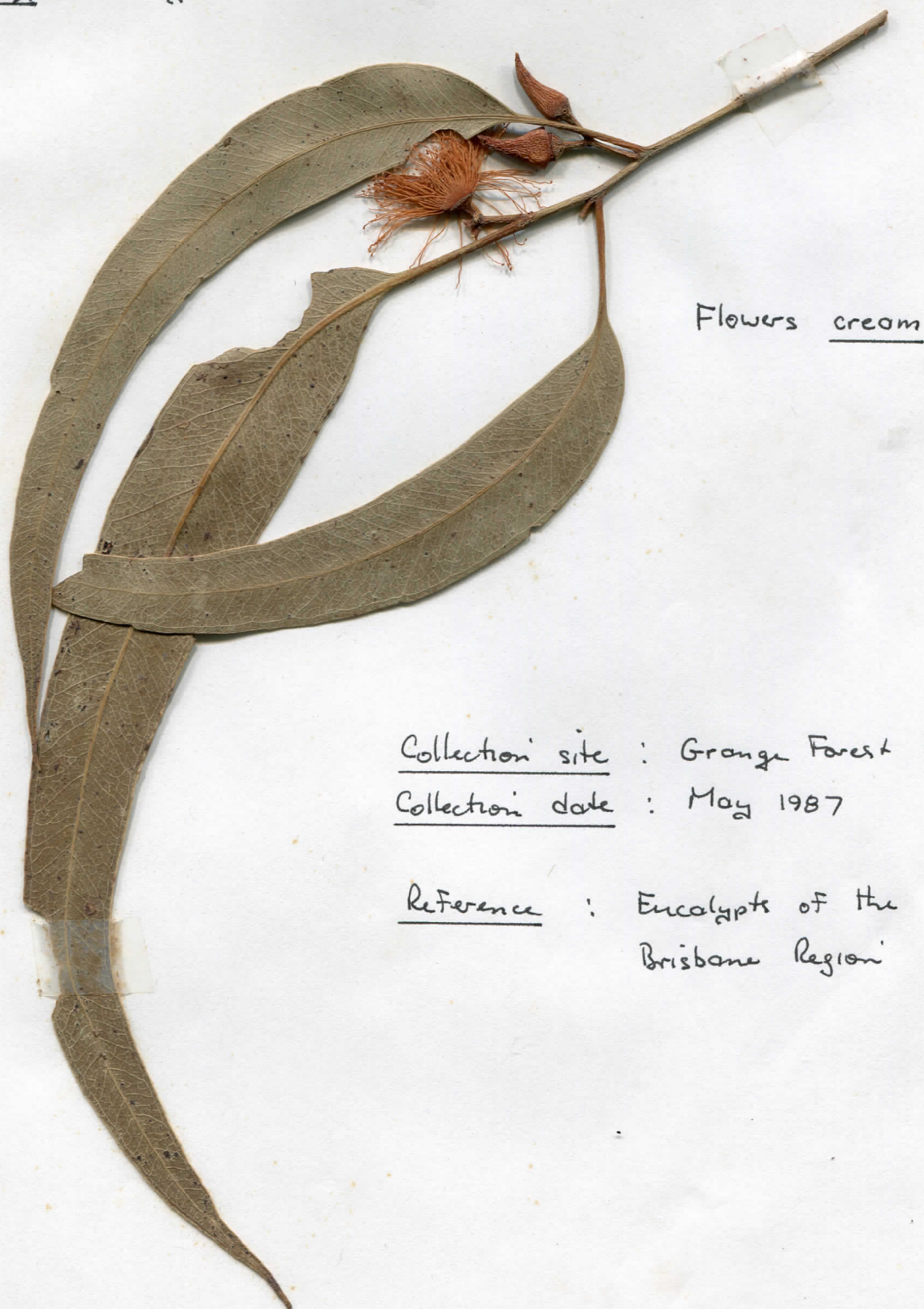
Eucalyptus tereticornis

( Myrtaceae )

Habit : Large tree. Bark smooth, glossy, marked with large red, blue or greyish patches, shedding in ribbons or irregular flakes, yellow when freshly exposed, often persistent towards the base.

Habitat : Best specimens on alluvial flats.

Flowering : May - June



Flowers cream

Collection site : Grange Forest Park

Collection date : May 1987

Reference : Eucalypts of the  
Brisbane Region